

# CA097/156

## Central Alarm

Makes all on-site alarm in front of you



### Features

- CE, UL Certification
- Using Modbus-TCP to build communication network
- 9.7"/15.6" touch screen operation
- Users can set the name of each on-site alarm in the central alarm on the fly, and can modify the alarm parameters and connection parameters of each on-site alarm through the network connection, without using additional devices.
- All parameter settings are password protected
- It can remotely display, switch and control the existing screens and buttons of the on-site alarm, and set the existing parameters of the on-site alarm, too.
- In the same area network, it can remotely display, switch and control the existing screens and buttons of the central alarm, and set the existing parameters of the central alarm, too.
- With alarm state test function, and can test buzzer sound.
- The central alarm can display the on-site alarm status including on-site alarm, on-site mute, and communication error.
- It has an event table, which is used to view up to 10,000 historical records of alarm events with time stamps.
- The offline function can be set to ensure that the alarm is suspended during the on-site alarm repair, room decoration, or network rebuild to cause abnormal communication.
- When the communication is abnormal, the indication of the on-site alarm displayed in the central alarm stays in the state before the abnormality, and displays the communication error indication, so that the user can understand the last on-site alarm state before the communication abnormality.
- Using Modbus-TCP, it can be integrated with the SCADS to provide on-site alarm, central alarm, and itself data.

## The Gentec logo is at the top left, featuring a stylized 'G' in a blue circle. To its right is the text 'GENTEC' in large red letters, with 'Solutions for Life' in smaller black letters below it. Below the logo is a 3D illustration of a SCADA system, including a grey cylindrical storage unit with the Gentec logo, a tablet computer displaying a blue screen, and the word 'SCADA' in large, grey, block letters at the bottom.



The screenshot displays the GE PaaS Control Room interface. At the top, a status bar shows the time as 12:34, the date as 30 Oct, and the location as Marshall. A red alarm icon is present, and the text '12:34 30 Oct Marshall Gas Alarm' is displayed. The main area is divided into three columns, each showing a 3D model of a gas turbine engine component. The left column shows the 'Air Compressor' (1F P S), 'Vacuum Pump' (1F CM), 'Air Compressor' (1F CR), 'GG Liquid Tank' (3F CV), 'CG Mainframe' (2F DMS), 'CG Mainframe' (2F ENT), '1F ER', '1F OPD', and '1F OPH'. The middle column shows the '1F P S', '1F CM', '1F CR', '3F CV', '2F DMS', '2F ENT', '2F GS', and '2F GU'. The right column shows the '3F DMS', '3F O S', '3F CR', '4F P', '4F PCU', '4F ICU', '4F CCU', '4F MEX', and '4F MEX'. Each component is represented by a green bar with a red arrow indicating its status. At the bottom, there is a navigation bar with icons for home, search, and other functions, and a footer with the text '© 2020 GE PaaS LLC. All rights reserved.' and the GE PaaS logo.

CA 097- 30



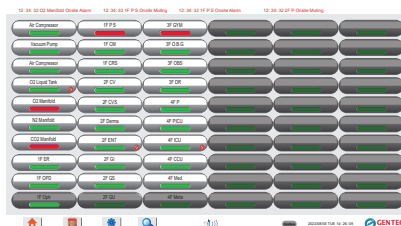
CA 097- 21



CA 097- 10



CA 156- 90



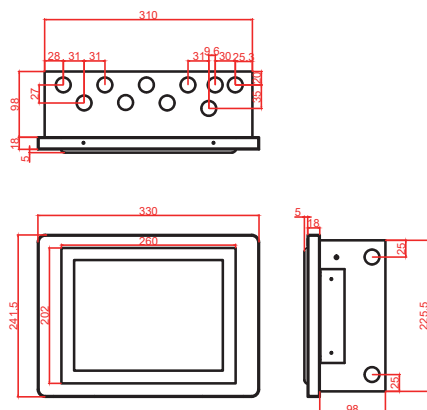
CA 156- 60



CA 156- 40

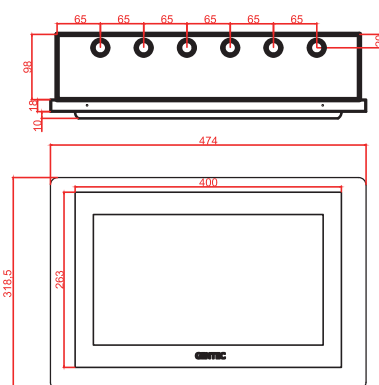
MECHANICAL		CA097		CA156		ENVIRONMENT	
Front Panel		Metal Alloy & ABS				Ambient Temperature	
Case Body		Metal Alloy				Ambient Humidity	
Dimensions (Width x Height x Depth)		Overall Size: 330mm x 241.5mm x 121mm Beneath the Wall: 310mm x 225.5mm x 98mm		Overall Size: 474mm x 318.5mm x 126mm Beneath the Wall: 445mm x 300.5mm x 98mm		Cooling	
Wall Mounting Opening (Width x Height)		310mm x 225.5mm		445mm x 300.5mm		Natural Air Cooling	
ELECTRICAL						COMMUNICATION	
Power Requirements		Input: 100~240 VAC,50~60Hz 1.5AMaximum				Modbus RTU	
Processor		Quad-Core RISC		Quad-Core RISC		Modbus TCP	
Display		9.7" TFT LCD LED Back Light Resolution:1024x768Pixels Colors :262k Brightness: 350 cd/m² Touch Panel: 4 wires resistance Type LCD Life Times> 30000 hours		15.6" TFT LCD LED Back Light Resolution:1920x1080Pixels Colors :26.2M Brightness: 300 cd/m² Touch Panel: Capacitive Type LCD Life Times> 30000 hours		2400~115200 baud, (8,N,1) 10/100/1000M Automatic Selection for Ethernet	
Buttons		Resistance Type Touch Panel		Capacitive Type Touch Panel		FUNCTIONS	
Buzzer		Adjustable Volume				Alarm history Data	
						Connection	
						Server	
						provide on-site alarm data	
CERTIFICATION						CE, UL	
Order Information							
Name				Type -U			
CA097				10: 10 connections 21: 21 connections 30: 30 connections			
CA156				40: 40 connections 60: 60 connections 90: 90 connections			

## Dimensions

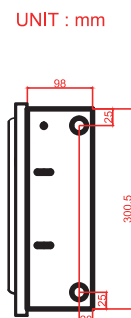


CA 097

UNIT : mm



CA 156



UNIT : mm

## Contact Information

Gentec Systems Corporation  
5F., No.51-3, Fusing Rd., Sindan District,  
new Taipei City 23150 Taiwan  
Tel: 886-2-8667-3290  
Fax: 886-2-8667-3289

WE MAKE NO WARRANTY OR REPRESENTATION, EITHER EXPRESSED OR IMPLIED, WITH RESPECT TO ITS CONTENT OR FITNESS FOR ANY PARTICULAR APPLICATION.